

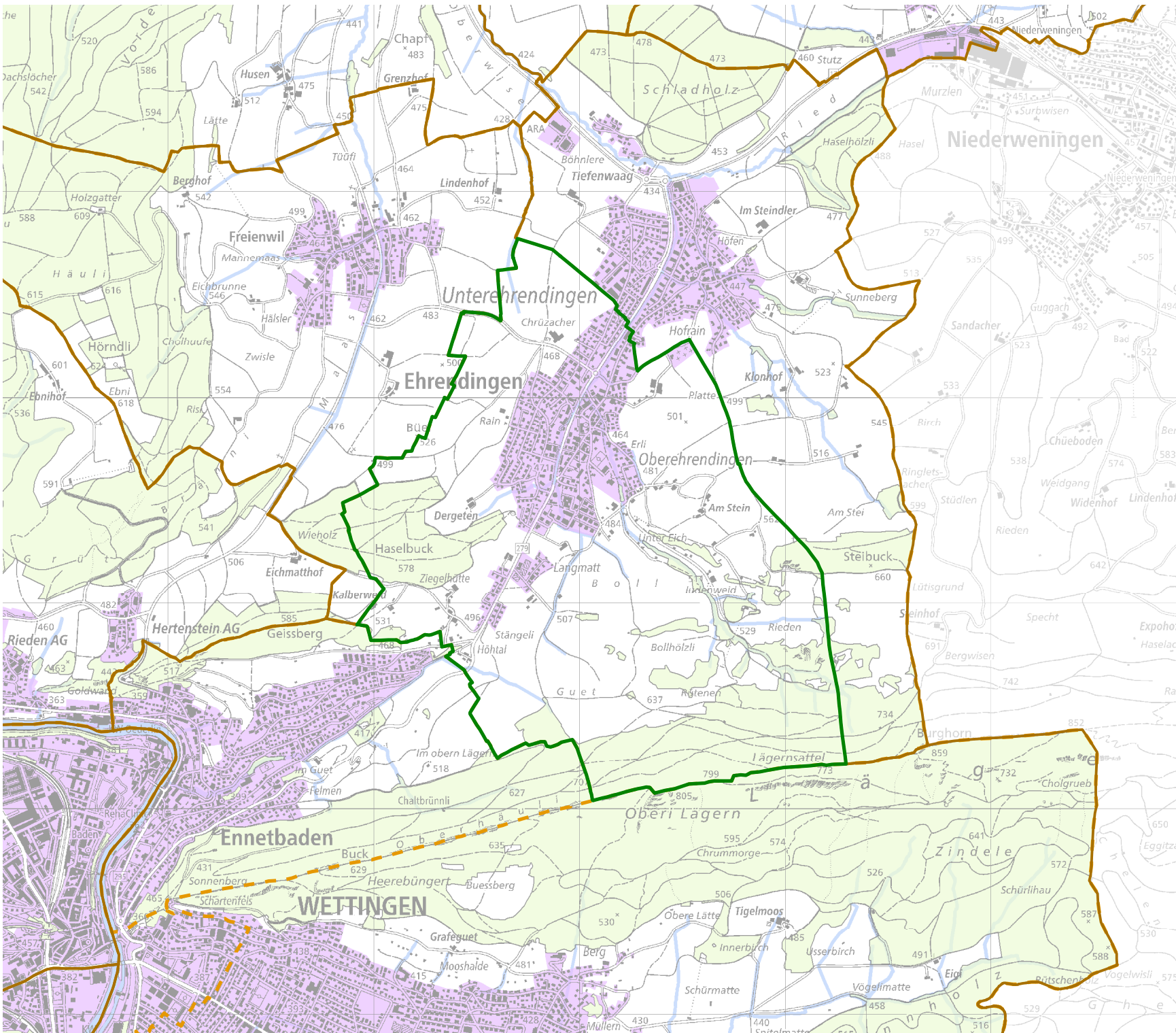
# JAGDREVIERE IM KANTON AARGAU






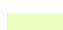
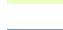
## Jagdrevier Nr. 31 Oberehrendingen

**BAU, VERKEHR UND UMWELT**  
Abteilung Wald

Kartenherstellung: 28.3.2018

Stand: 1.1.2018



-  Jagdrevier Nr.31
-  Schonflächen
-  übrige Jagdreviere
-  Bauzonen (inkl Baugebiet)
-  Gemeindegrenzen
-  Wald
-  Gewässer

Quellen: Bundesamt für Landes-  
topografie, Abteilung Wald des  
Kantons Aargau